

# ≈ AIRTAME

PRESENTATION

---



USB (HDD 5V 1A)

HDMI IN 2 (ARC)

HDMI IN 1 (STB)

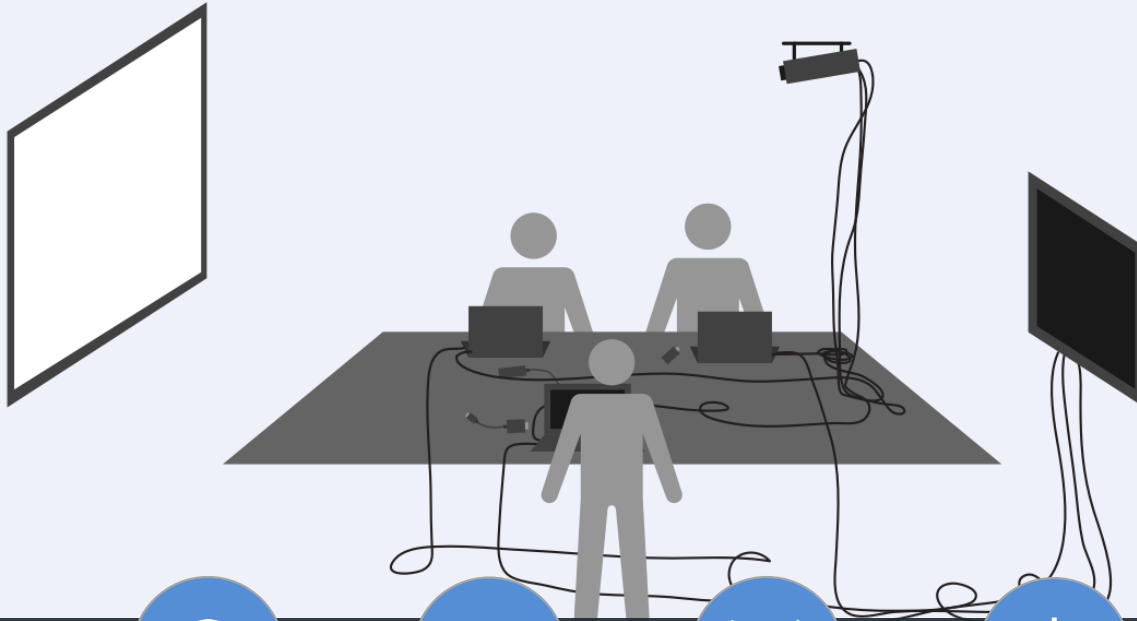


BACK

EXIT

# Today's Cable Mess

Limited freedom



Wasted time



Compatibility  
issues

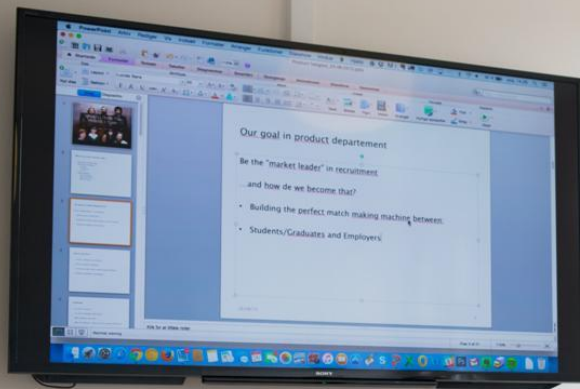
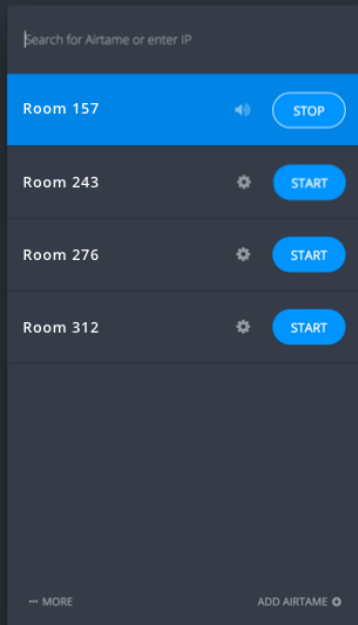


Restricted  
movement



Costly  
installations

# How it Works

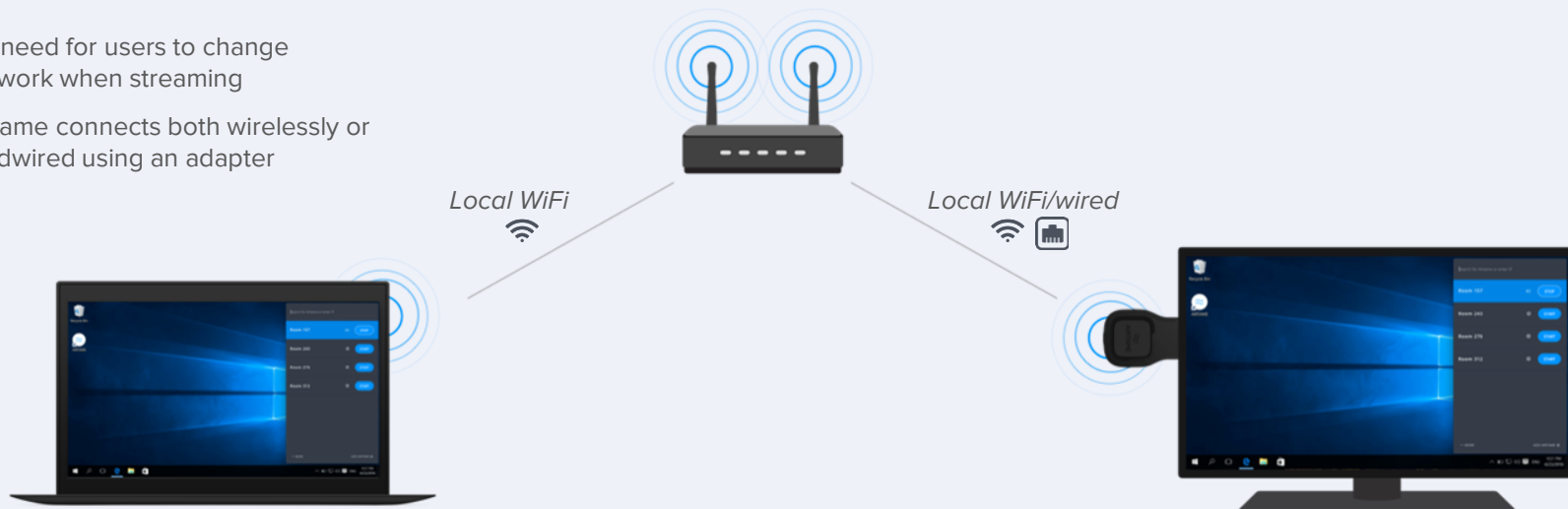


# How it Integrates

Airtame integrates easily on [existing network](#)



- ✓ No need for users to change network when streaming
- ✓ Airtame connects both wirelessly or hardwired using an adapter





## Present from Mobile



### Pictures

*jpg, png, bmp*



### Presentations

*pdf*  
(doc, xls, ppt, key from cloud services)



### Cloud services

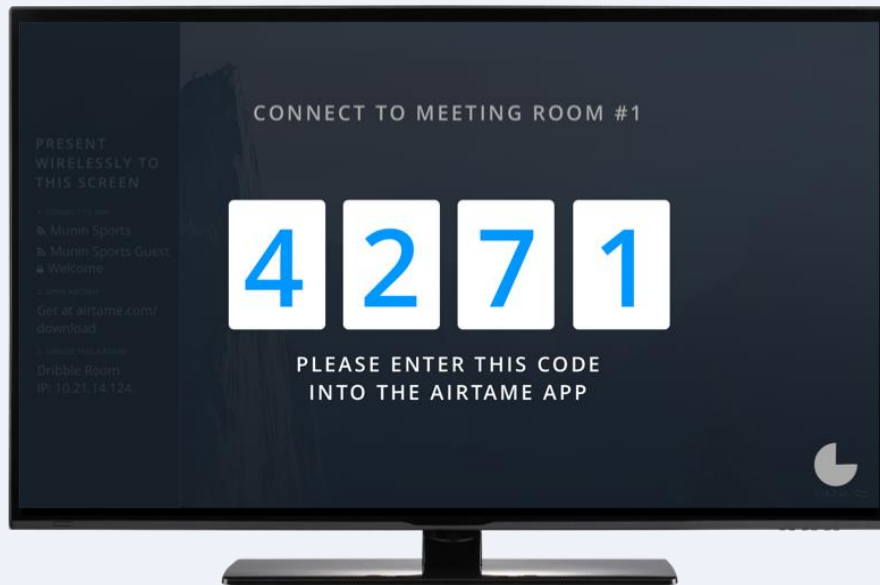
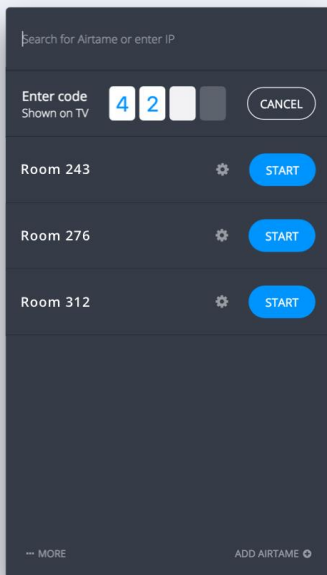
iOS (Dropbox)  
Android (Dropbox, Drive, Box)





# Connect Safely

Enable the Pin Code feature



The app for mobile devices will not support pin code connect until later this year

# Unfold your creativity

Customize the background to suit your needs



- ✓ **Standard background**  
Customizable 1,2,3 guide to get **new users** easily up and running
- ✓ **Image background**  
Upload an **image** and set as background
- ✓ **Dashboard background**  
Set almost any **website URL** as background to show for example, news feed, updates, calendar or slideshow
- ✓ **Customize screen layout**  
Show either the **1,2,3 guide**, **minimalistic** or **full screen mode**

# Unfold your creativity

Customize the [background](#) for any purpose



- ✓ **Standard background**  
Customizable 1,2,3 guide to get **new users** easily up and running
- ✓ **Image background**  
Upload an **image** and set as background
- ✓ **Dashboard background**  
Set almost any **website URL** as background to show for example, news feed, updates, calendar or slideshow
- ✓ **Customize screen layout**  
Show either the **1,2,3 guide**, **minimalistic** or **full screen mode**



# Unfold your creativity

Customize the background for any purpose



- ✓ **Standard background**  
Customizable 1,2,3 guide to get **new users** easily up and running
- ✓ **Image background**  
Upload an **image** and set as background
- ✓ **Dashboard background**  
Set almost any **website URL** as background to show for example, news feed, updates, calendar or slideshow
- ✓ **Customize screen layout**  
Show either the **1,2,3 guide**, **minimalistic** or **full screen mode**

# Use case

## Digital signage

- Easy branding
- Visualize Goals
- Show metrics



# Use case

## Working

- Easy collaboration
- Free movement
- Clean look





# Use case

## Digital signage

- Easy branding
- Visualize Goals
- Show metrics



# Plug & Play



## Flexible Power

Use a 5V 1A USB port or the included AC-Adapter



## USB Accessories

Optional Ethernet adapter for wired LAN connection



## Any screen

Connect to screens without HDMI using VGA or DVI adapters





# Use case

## Meeting rooms

- Easily share results
- Fast switch between computers
- Dynamic collaboration





# Device Installation

Flexible and build for professional installations



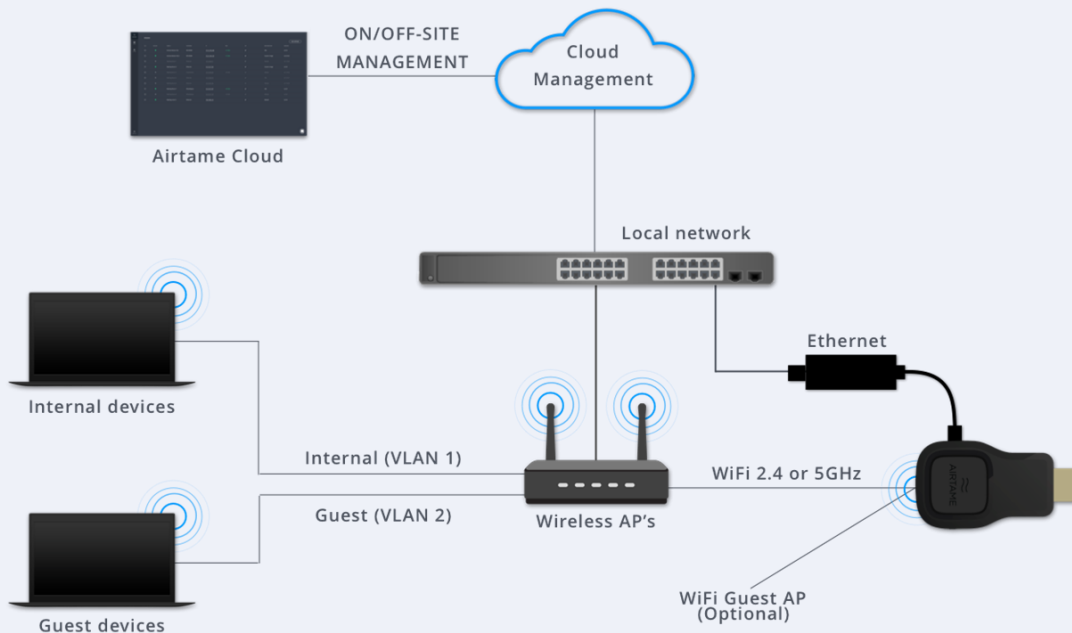
# Enterprise Network

Flexible integration on [Secure networks](#)



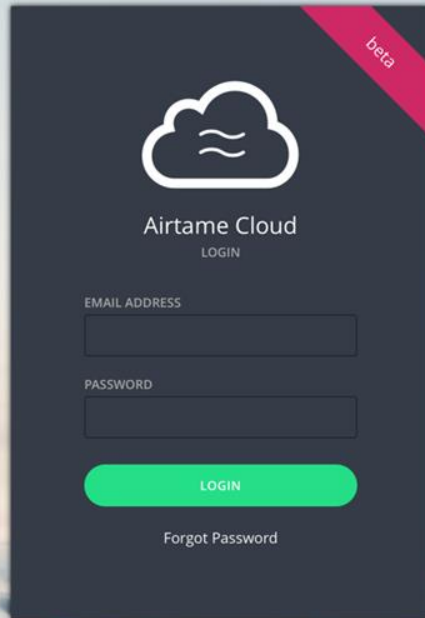
## Internal + Guest network setup

- 1** Access across VLANs  
Connect Airtame to for example guest network and then allow streaming from internal network
- 2** Connect to two VLANs  
Connect Airtame to both internal and Guest by having both a Wireless and ethernet simultaneously
- 3** Use Airtame Guest AP  
Connect Airtame to internal network with WiFi or ethernet and then enable the Airtame Guest AP




Learn more and get tips and tricks in our [Enterprise Deployment Guide](#)

# Airtame Cloud



The login interface is a dark gray rectangular card centered on the page. In the top right corner, there is a red diagonal banner with the word "beta" in white. The card features a white cloud icon with two horizontal lines inside, representing a screen. Below the icon, the text "Airtame Cloud" is displayed in a white sans-serif font, followed by "LOGIN" in a smaller, lighter gray font. There are two input fields: "EMAIL ADDRESS" and "PASSWORD", both with light gray labels and dark gray rectangular boxes. Below these fields is a bright green rounded rectangular button with the word "LOGIN" in white. At the bottom of the card, the text "Forgot Password" is written in a small, light gray font.

beta



Airtame Cloud

LOGIN

EMAIL ADDRESS

PASSWORD

LOGIN

Forgot Password

# Easy device management

Remotely manage devices with [Airtime Cloud](#)



## Monitor device status

Ensure that all devices are healthy monitoring  
e.g. online/offline, WiFi signal, FW version



## Change settings

Click the IP address and enter device  
configuration panel



## Add users

Invite new users and administrate rights or  
add more organisations to your account.



## Easily connect devices

Copy **unique token** from Cloud and paste to each  
device to be controlled

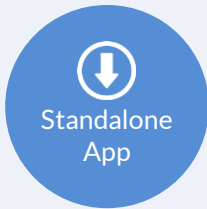
The screenshot displays the Airtime Cloud management interface. On the left is a dark sidebar with navigation icons for 'Airtime', 'Users', and 'Profile', along with a 'Sign out' button at the bottom. The main area is titled 'Airtime' and contains a table of devices. Each row represents a device with columns for an 'ONLINE' status (checkbox and green dot), 'NAME', 'NETWORK', 'IP' (with a link icon), 'RSSI' (with a color-coded signal strength), 'AP' (with a checkmark or connection icon), 'BACKGROUND', and 'VERSION'. A table with 5 rows of device data is shown. In the top right corner of the main area is an 'ADD AIRTIME' button, and in the bottom right corner is a notification bell icon.

	ONLINE	NAME	NETWORK	IP	RSSI	AP	BACKGROUND	VERSION
<input type="checkbox"/>	<span style="color: green;">●</span>	Meeting Room 1	Cloud Demo	<a href="#">10.13.38.211</a>	-45 dBm	⊗	Default	v2.1.0-n7
<input type="checkbox"/>	<span style="color: green;">●</span>	Meeting Room 3	Cloud Demo	<a href="#">10.13.38.224</a>	-76 dBm	✓	Default	v2.1.0-n7
<input type="checkbox"/>	<span style="color: green;">●</span>	Meeting Room 4	Ethernet	<a href="#">10.13.38.210</a>	-	✓	URL	v2.1.0-n7
<input type="checkbox"/>	<span style="color: green;">●</span>	Meeting Room 6	Cloud Demo	<a href="#">10.13.38.136</a>	-67 dBm	✓	Default	v2.1.0-n7



# A living product

New free features [in the pipeline](#)



## Stand Alone version

Self executable version of the App  
without need for computer admin rights



## Mass deployment of App

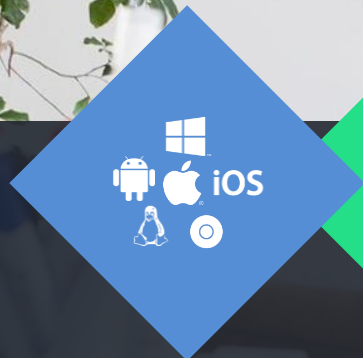
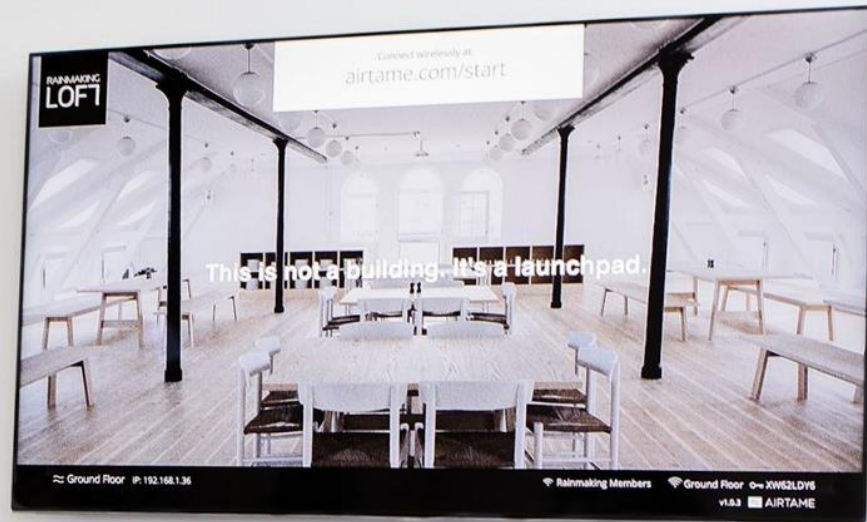
.msi version of the installer for easy remote roll  
out to PC's



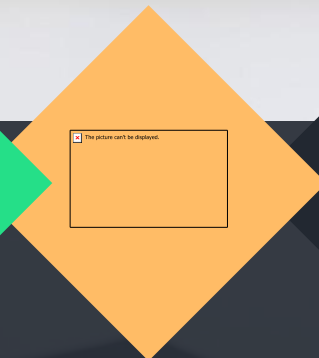
## Chromebook support

To be a true Cross-Platform solution  
Chromebook will be added to the list





Made for Flexible & Manageable  
Cross-Platform Free over the  
air updates



2 in 1  
Stream + signage





# ≈ AIRTAME

Thank you for watching

---



## Support

e-mail: [sales@airtame.com](mailto:sales@airtame.com)



## Help & Resources

[airtame.help](https://airtame.help)

[Deployment guide](#)